



# MSHCP Amendment: Agency Focus Group Covered Species

Kimberley Goodwin  
February 7, 2025



MOJAVEMAX.COM



desert conservation  
PROGRAM





# COVERED SPECIES

**Objective:** Revise/reduce Covered Species list to focus on those most at risk from non-federal development activities

	Current MSHCP
Mammals	4
Birds	8
Reptiles	14
Amphibians	1
Invertebrates	10
Plants	41
<b>Total</b>	<b>78</b>

- Over 50% of species occur above 4,000 ft, but only 0.04% of Covered Activities have occurred above 4,000 ft
- Covered Activities do not directly impact aquatic species



# SPECIES REVISION PROCESS



**Building the List:** started with a list of over 450 species to evaluate for potential coverage under the Amendment.

- Current MSHCP: all covered, evaluation, and watch list species
- Endangered Species Act threatened, endangered, and candidate species
- State listed species (NRS)
- USFWS Birds of Conservation Concern (2008)
- BLM Sensitive and Special Status Species
- Nevada Native Plants Society
- NNHP (NDNH) Animal and Plant At Risk Tracking List (2016)
- NNHP (NDNH) Plant and Animal Watchlist (2016)
- NNHP Climate Change Vulnerability Index
- Nevada Wildlife Action Plan (2012) Species of Conservation Priority
- Great basin Bird Observatory Comprehensive Bird Conservation Plan (2010)
- Convention on International Trade in Endangered Species (CITES; 2017)
- And more...



# SPECIES REVISION PROCESS



## Solicited feedback from species experts:

- Nevada Department of Wildlife
- Nevada Natural Heritage Program
- U.S. Fish and Wildlife Service
- Great Basin Bird Observatory
- Southern Nevada Water Authority
- The Nature Conservancy
- University of Nevada, Las Vegas

## Reduced list to 65 species for further evaluation

- cursory review of species range to determine whether it occurred in Clark County
- All current state/federal-listed species included
- Presence on multiple lists indicating higher risk of state/federal listing



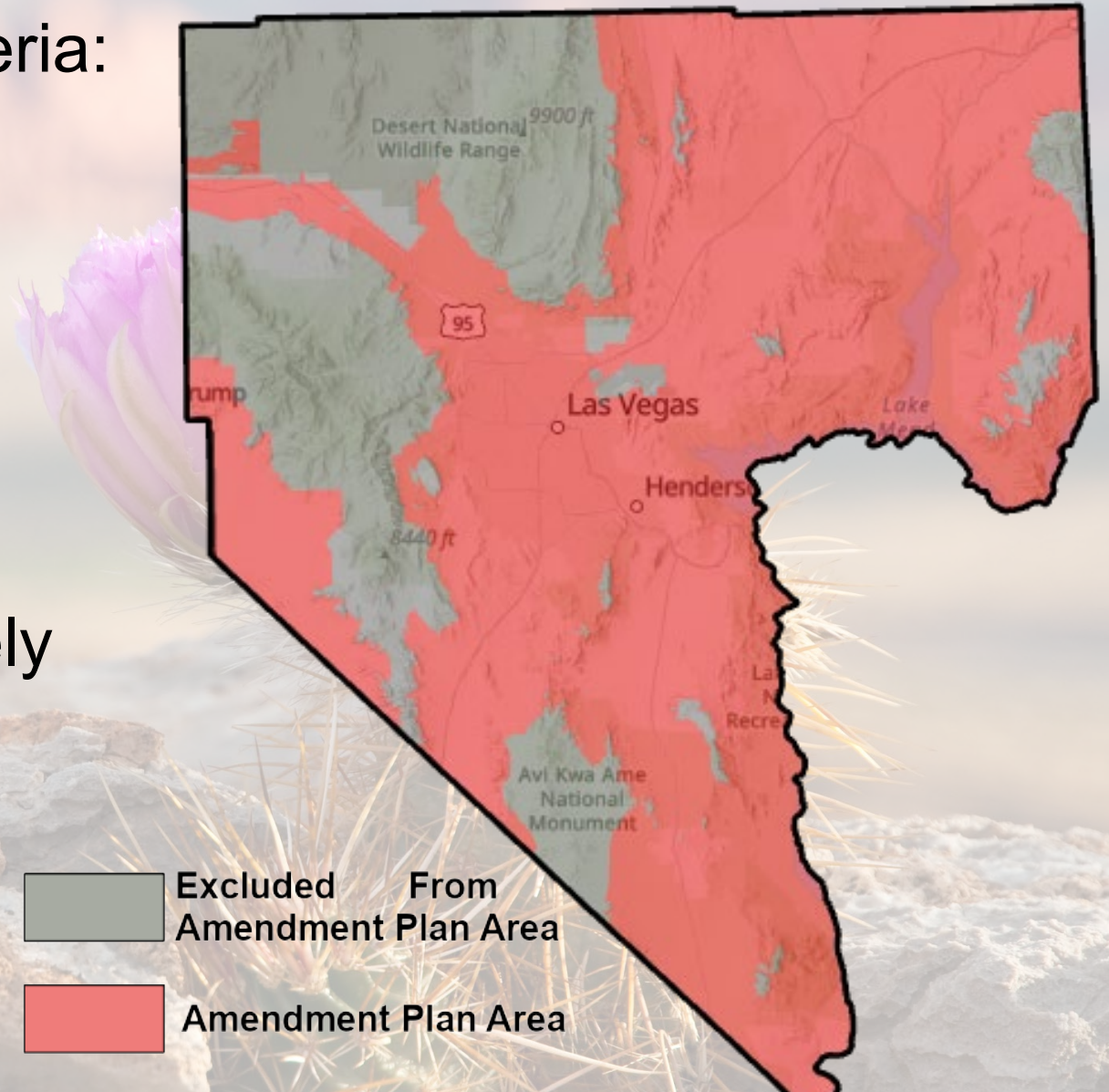
# SPECIES EVALUATION CRITERIA



Evaluated 65 species against 4 criteria:

- Range
- Status
- Impact
- Data

**Criteria 1: Range.** The species must be known to occur, or is likely to occur, within the Amendment Plan Area





# SPECIES EVALUATION CRITERIA



**Criteria 2: Status.** The species must meet at least one of the following status criteria:

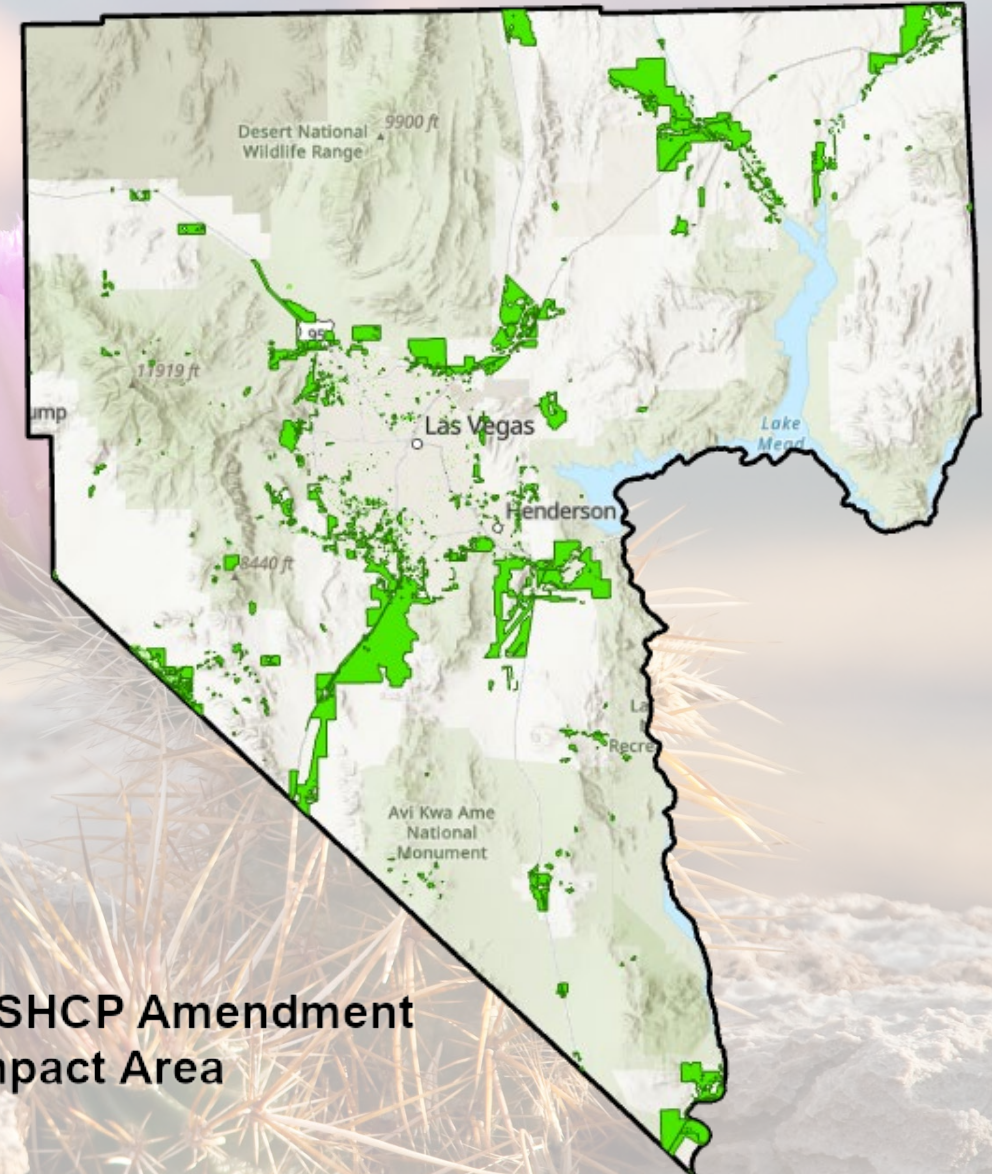
- Listed or proposed for listing as threatened or endangered under the Endangered Species Act.
- Candidates for potential future listing as threatened or endangered under the Endangered Species Act.
- Likely to become listed as threatened or endangered under the Endangered Species Act within the proposed permit term of 50 years.
- Fully protected by the state of Nevada.
- Likely to become fully protected by the state of Nevada within the proposed permit term of 50 years.



# SPECIES EVALUATION CRITERIA



**Criteria 3: Impact.** To meet this criteria, the species or its habitat must be likely to be adversely affected by covered activities (i.e., at least a portion of the species distribution occurs on private lands or on lands that may become private).

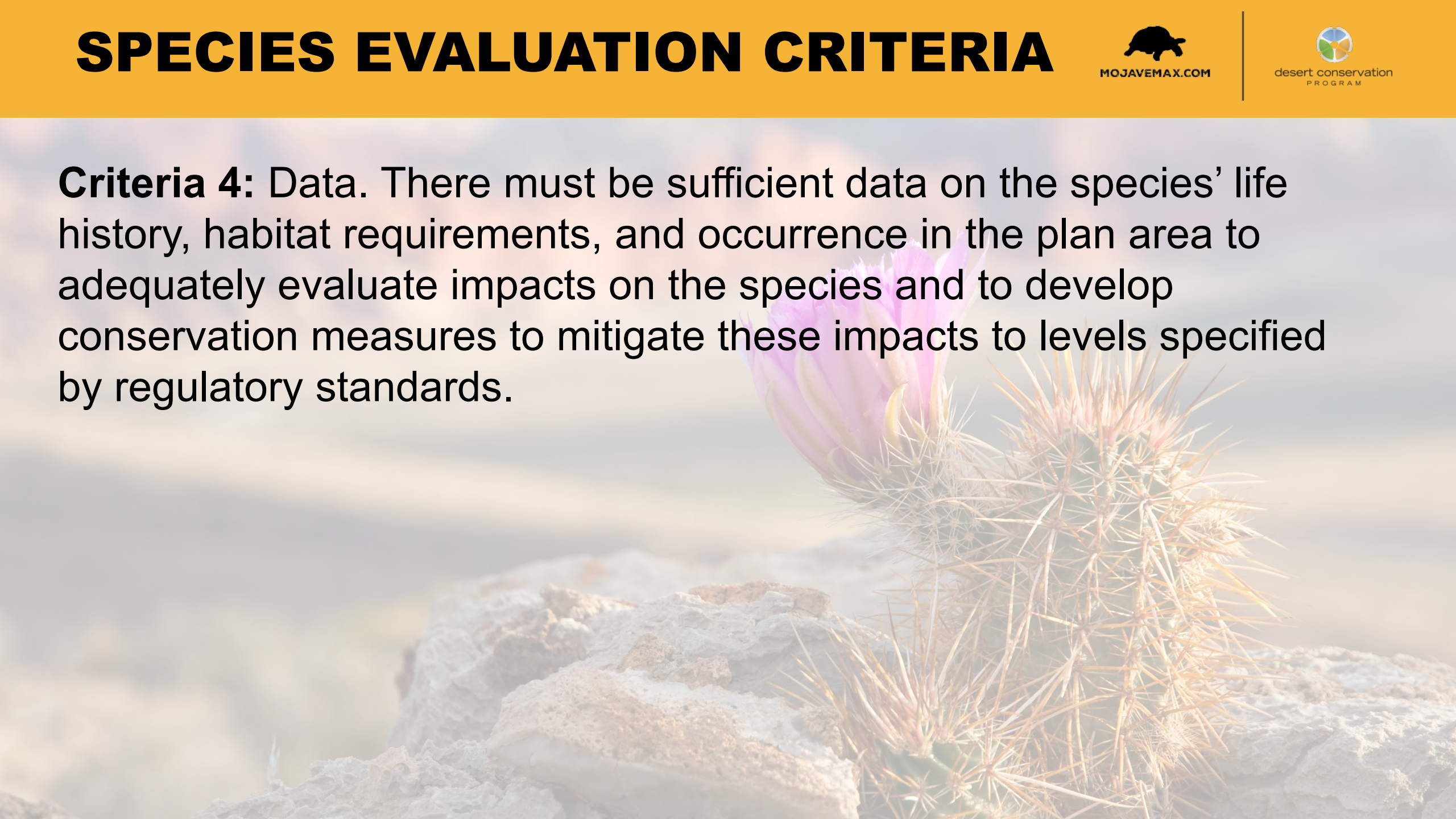




# SPECIES EVALUATION CRITERIA



**Criteria 4: Data.** There must be sufficient data on the species' life history, habitat requirements, and occurrence in the plan area to adequately evaluate impacts on the species and to develop conservation measures to mitigate these impacts to levels specified by regulatory standards.





# SPECIES EVALUATION PROCESS



Species must meet all 4 criteria to become a Covered Species

- Periodically re-evaluated based on emerging information
- Annual review of the U.S. Fish and Wildlife Service National Listing Workplan – add species under evaluation.



# PROPOSED COVERED SPECIES



## Birds

Golden eagle\*  
Western burrowing owl\*  
Yellow-billed cuckoo  
Gilded flicker\*  
Southwestern willow flycatcher  
Loggerhead shrike\*  
Ridgway's rail\*  
Bendire's thrasher\*  
LeConte's thrasher\*  
Arizona Bell's vireo

\*New species

## Mammals

Desert pocket mouse\*  
Townsend's big-eared bat\*  
Spotted bat\*

## Reptiles

Desert tortoise  
Banded Gila monster\*





# PROPOSED COVERED SPECIES



## Plants

Sticky ringstem  
Las Vegas bearpoppy  
Threecorner milkvetch  
Alkali mariposa lily  
Blue Diamond cholla  
Silverleaf sunray\*  
Pahrump Valley buckwheat  
Las Vegas buckwheat\*  
Sticky buckwheat  
White margined penstemon  
Parish phacelia  
St. George blue-eyed grass\*  
Eastern Joshua tree\*

## Invertebrates

Monarch butterfly\*  
Mojave poppy bee\*

\*New species

